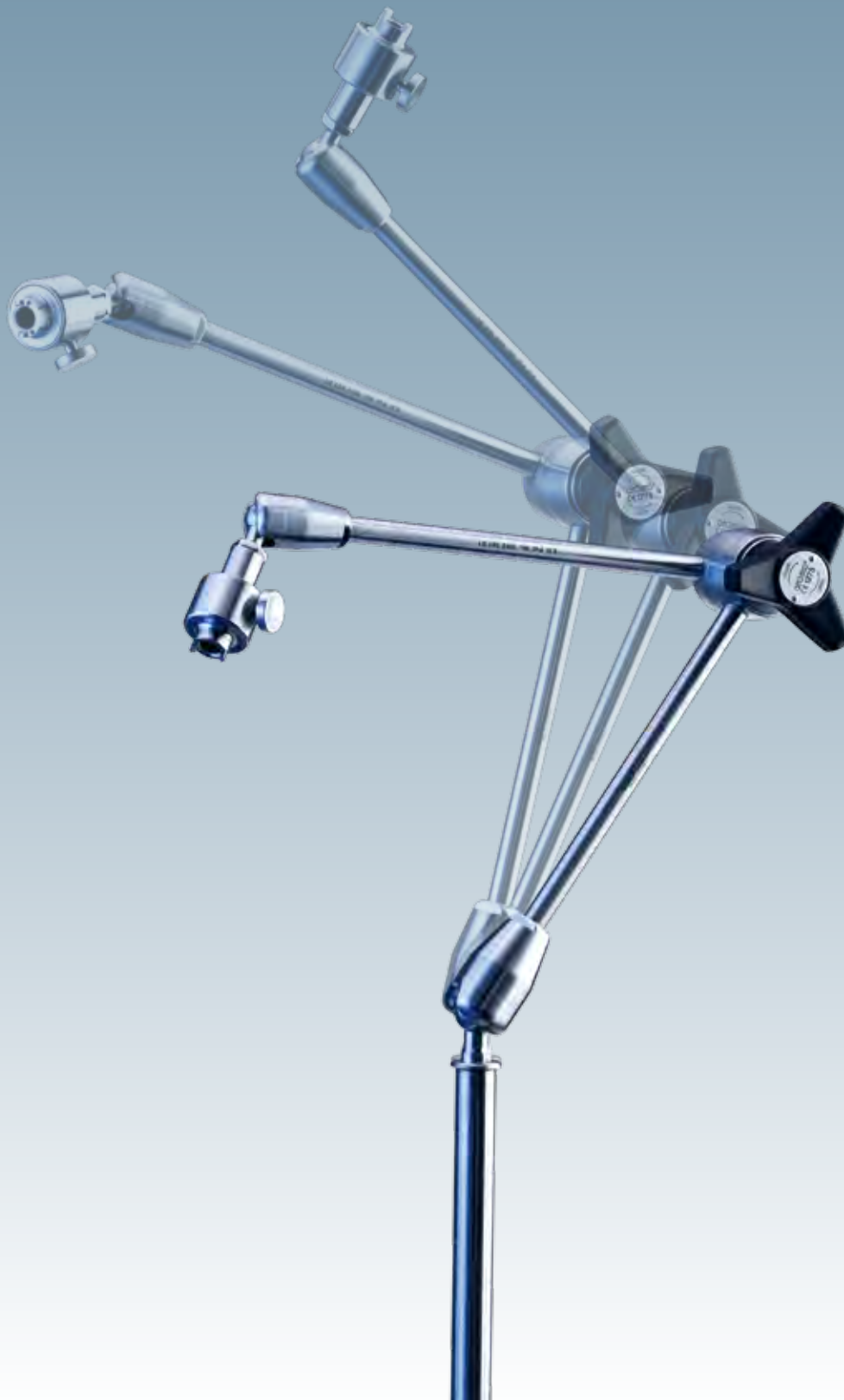


ASSISTO®

by GEOMED®
MEDIZIN-TECHNIK



ASSISTO® patented Holding System for medical surgeries



Application area:

Arm System for open surgery,
Endoscopy, Respiratory and
Anaesthesia, Cardiac Surgery, ENT
and customized arm systems

Selectable Holding Power



Function of ASSISTO® patented Holding System





Holding Arm

Holding Arm



Stands

Stands



GEO-Lock / Holders

Holders



Clamp Sockets

Clamp Sockets



ASSISTO® System

ASSISTO®



GEO-Rider

GEO-Rider



Accessories

Accessories



Care & Maintenance

Care/Maintenance

COMPONENTS



HOLDING ARM 10 KG

CA Arms with holding power up to 10 kg



L = Length

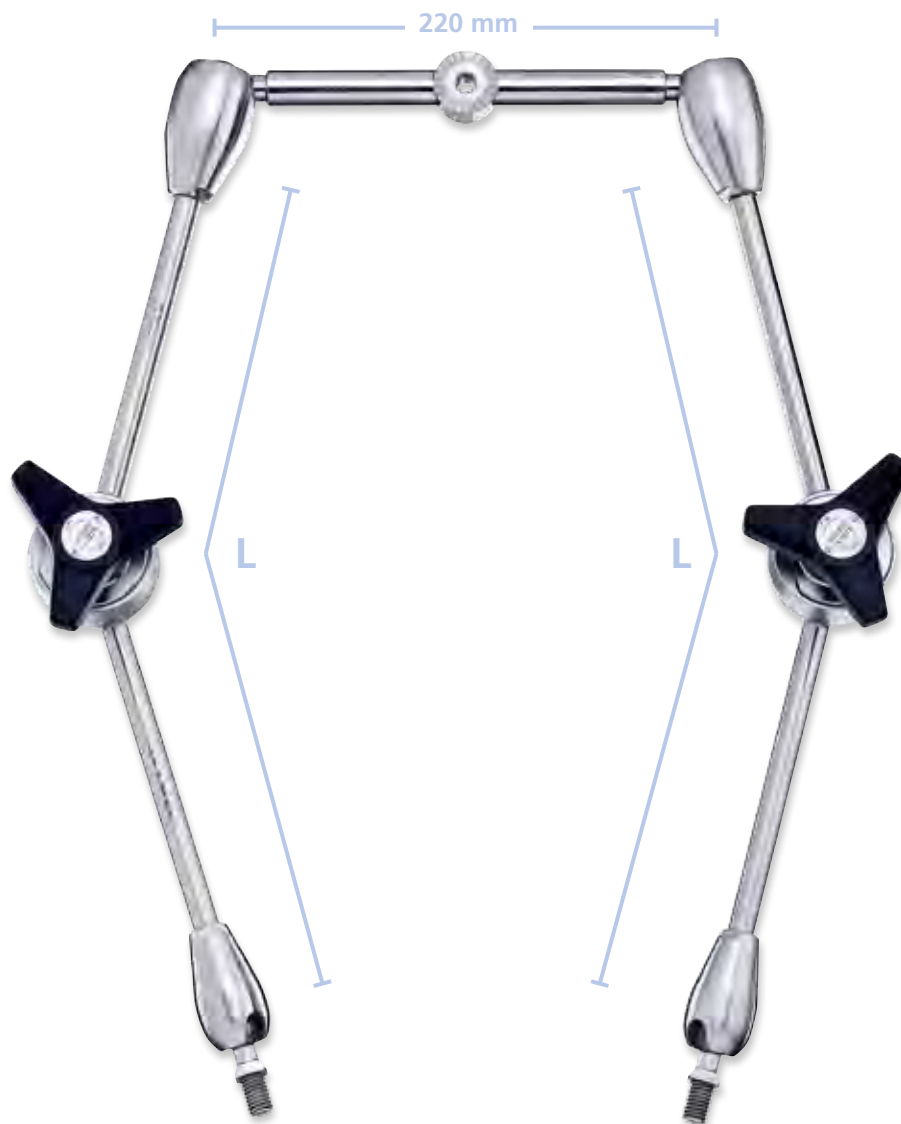
L = 310 mm



L = Length

L = 420 mm

CB Arms with holding power up to 10 kg



L = Length

L = 310 mm

L = 420 mm (photo)



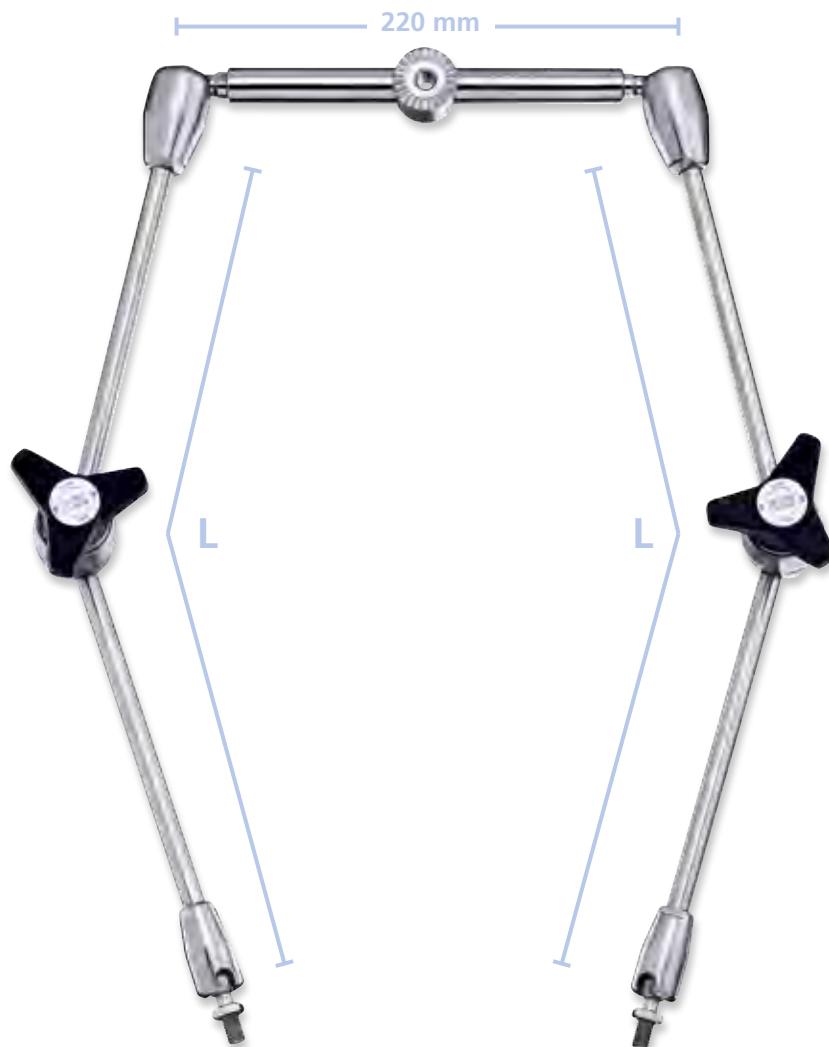
HOLDING ARM 5KG

CE Arms with holding power up to 5 kg



L = Length	L = 250 mm	L = 300 mm	L = 400 mm (photo)	L = 500 mm	L = 700 mm
------------	------------	------------	-----------------------	------------	------------

CF Arms with holding power up to 5 kg



L = Length

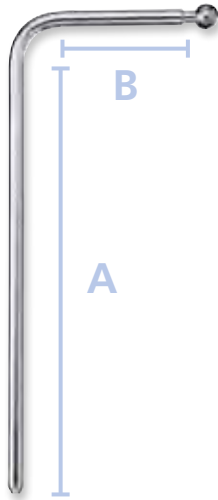
L = 300 mm



L = 400 mm (photo)



STANDS

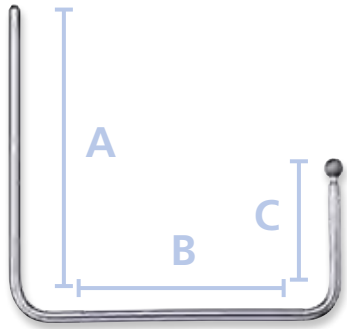
Standard-Stands



	A x B	A x B
	470 x 170 mm	600 x 220 mm
	SLV4717 <small>(photo)</small>	SLV6022
	SLO4717	SLO6022



A				
300 mm	400 mm	450 mm	500 mm	650 mm
SG30 <small>(photo)</small>	SG40	SG45	SG50	SG65



A x B x C
400 mm x 400 mm x 170 mm
SU404017

Special-Stands

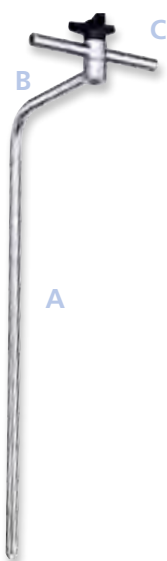
detachable



A x B	A x B
800 x 200 mm	470 x 170 mm
SZV8020 <small>(photo)</small>	SZV4717
SZO8020	SZO4717

A x B x C
800 x 400 x 170 mm
SZ804017 <small>(photo)</small>

Stand for double arm



A x B x C

560 x 200 x 170 mm

SD562017

detachable Stand for double arm

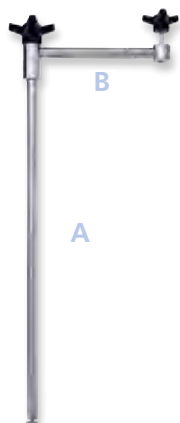


A x B x C

800 x 200 x 170 mm

SDZ802017

Stand for double arm - rotatable



A x B

550 x 200 mm

SD5520



A

550 mm

SDN55



B

200 mm

SDN20



HOLDERS

GEO-Lock / Holders





	Description	Article no. of thread	GEO-Lock article no.
	GEO-Lock	CE/CF Arms CI 500-08 CA/CB Arms CI 501-08	
	Universal Retractor Holder	CI 410-01	CI 510-01 (photo)
	Universal Retractor Holder Ø 60 mm	CI 410-03 (photo)	CI 510-03
	Endoscope Holder 8 mm 10 mm	CI 420-08-09 CI 420-10-09	CI 520-10-09 (photo)
	Universal Endoscope Holder 2,7 – 10mm	CI 422-00-09	CI 522-00-09 (photo)
	Universal Endoscope Holder rotatable 2,7 – 10mm	CI 424-00	CI 524-00 (photo)
	Universal Endoscope Holder adjustable 2,7 – 10mm	CI 426-00	CI 526-00 (photo)
	Universal Endoscope Holder 2,7 – 10mm	CI 428-00-09	CI 528-00-09 (photo)
	Universal Tube Holding Plate	CI 450-30-09	
	Universal Retractor and Forceps Holder Device		CI 610-15
	Extended Articulation 19 cm 10 cm	CI 430-00 CI 430-10	CI 530-01 CI 530-10
	Universal Tray Holder		CI 415-02
	Connecting Piece for Double Arm System		CI 620-00



CLAMP SOCKETS



CI 300-42

Clamp socket K1
made of stainless steel,
for height-adjustable
Stand Ø 16 mm,
with holding width of 42 mm
for rails 25/32 x 8/12 mm



CI 310-50

Clamp socket K2
made of stainless steel,
for height-adjustable
Stand Ø 16 mm,
electrically insulated up to 4.5 kV AC
with holding width of 50 mm
for rails 25/32 x 8/12 mm

**CI 350-50-09**

Clamp socket K3
made of light metal,
for height-adjustable
Stand Ø 16 mm,
with holding width of 50 mm
for rails 25/32 x 8/12 mm
and tubes Ø 12 - 35 mm

**CI 350-50-10**

Clamp socket K3
made of light metal,
for height-adjustable
Stand Ø 16 mm,
with holding width of 50 mm
for rails 25/32 x 8/12 mm
and tubes Ø 12 - 35 mm



ASSISTO®

ASSISTO® SYSTEM

ASSISTO® Matrix

		without stand	Standard Stands*								
			SLV 4717	SLV 6022	SLO 4717	SLO 6022	SG30	SG 40	SG 50	SG 65	SU 404017
CA Holding Arms*	310mm		CA 301-01	CA 301-02	CA 301-03	CA 301-04					CA 301-20
	310mm + CI 410-01						CA 301-40				
	310mm + CI 500-08		CA 305-01	CA 305-02	CA 305-03	CA 305-04	CA 305-40				CA 305-20
	420mm		CA 400-01	CA 400-02				CA 400-41	CA 400-43		
	420mm + CI 410-01		CA 401-01	CA 401-02		CA 401-04	CA 401-40				CA 401-20
	420mm + CI 500-08	CA 405-00	CA 405-01	CA 405-02	CA 405-03	CA 405-04	CA 405-40	CA 405-41		CA 405-44	CA 405-20

		without stand	Standard Stands*								
			SLV 4717	SLV 6022	SLO 4717	SLO 6022	SG30	SG 40	SG 45	SG 50	SG 65
CE Holding Arms*	250mm + CI 500-08							CE 205-41			
	300mm					CE 300-40					
	300mm + CI 410-01					CE 301-40			CE 301-43		
	300mm + CI 420-10					CE 302-40					
	300mm + CI 422-00					CE 303-40					
	300mm + CI 500-08		CE 305-01				CE 305-40				
	400mm		CE 400-01				CE 400-40				
	400mm + CI 410-01		CE 401-01				CE 401-40	CE 401-41	CE 401-42	CE 401-43	
	400mm + CI 420-10						CE 402-40	CE 402-41		CE 402-43	
	400mm + CI 422-00		CE 403-01				CE 403-40	CE 403-41		CE 403-43	
	400mm + CI 500-08		CE 405-01				CE 405-40	CE 405-41		CE 405-43	
	500mm + CI 410-01							CE 501-41		CE 501-43	

		Detachable Stands*				
		SZV8020	SZV4717	SZV7020	SZ707017	SZ804017
CA Holding Arms*	310mm + CI 410-01	CA 301-07		CA 301-06	CA 301-21	CA 301-22
	310mm + CI 500-08	CA 305-07		CA 305-06	CA 305-21	CA 305-22
	420mm		CA 400-05			
	420mm + CI 410-01	CA 401-07		CA 401-06	CA 401-21	CA 401-22
	420mm + CI 500-08	CA 405-07		CA 405-06	CA 405-21	CA 405-22

		Double Arm Stand*		
		SD562017	SDZ802017	SD5520
CB Holding Arms*	310mm + CI 410-01	CB 301-30		
	420mm + CI 410-01	CB 401-30	CB 401-32	
	420mm + CI 500-08	CB 405-30	CB 405-32	CB 405-35

		Double Arm Stand*		
		SD562017	SDZ802017	SD5520
CF Holding Arms*	400mm + CI 410-01	CF 401-30	CF 401-32	
	400mm + CI 500-08	CF 405-30	CF 405-32	CF 405-35

* Special length on request



GEO-RIDER

GEO-Rider

More possibilities –
Attachable adapter for 10 kg ASSISTO® Arm Systems
for the fixation of additional retractors



Ø 6 mm

for accessories Ø 6 mm

GEO-Rider Article no.
CZ 010-00-06





Ø 10 mm

for accessories Ø 10 mm

**GEO-Rider Article no.
CZ 010-00-10**





ACCESSORIES

Retractors

	Dimension			
		GEO-Rider Ø 6 mm CZ 012-00-06	GEO-Rider Ø 10 mm CZ 012-00-10	GEO-Lock
 LANGENBECK	30x11 mm	CZ 100-01-06	CZ 100-01-10	CI 650-03
	40x11 mm	CZ 100-02-06 <small>(photo)</small>	CZ 100-02-10	CI 650-04
	50x11 mm	CZ 100-03-06	CZ 100-03-10	CI 650-05
 FRITSCH	35x40 mm	CZ 110-01-06	CZ 110-01-10	
	40x50 mm	CZ 110-02-06 <small>(photo)</small>	CZ 110-02-10	
	45x60 mm	CZ 110-03-06	CZ 110-03-10	
	45x75 mm	CZ 110-04-06	CZ 110-04-10	
	65x85 mm	CZ 110-05-06	CZ 110-05-10	
 FRITSCH <small>MOVABLE</small>	35x40 mm		CZ 114-01-10	
	40x50 mm		CZ 114-02-10 <small>(photo)</small>	
	45x60 mm		CZ 114-03-10	
	45x75 mm		CZ 114-04-10	
	65x85 mm		CZ 114-05-10	



	Dimension			
		GEO-Rider Ø 6 mm CZ 012-00-06	GEO-Rider Ø 10 mm CZ 012-00-10	GEO-Lock
 MIDDELDORPF	16x14 mm	CZ 120-01-06	CZ 120-01-10	
	22x21 mm	CZ 120-02-06	CZ 120-02-10	
	30x30 mm	CZ 120-03-06 <small>(photo)</small>	CZ 120-03-10	
 ISRAEL <small>BLUNT</small>	4 prongs 40x40 mm	CZ 130-04-06	CZ 130-04-10	CI 640-05
	5 prongs 45x50 mm	CZ 130-05-06	CZ 130-05-10	
	6 prongs 50x60 mm	CZ 130-06-06 <small>(photo)</small>	CZ 130-06-10	CI 640-06
	6 prongs 70x70 mm	CZ 130-07-06	CZ 130-07-10	CI 640-07
 VOLKMANN <small>BLUNT</small>	1 prong	CZ 140-01-06	CZ 140-01-10	
	2 prongs	CZ 140-02-06	CZ 140-02-10	
	3 prongs	CZ 140-03-06	CZ 140-03-10	
	4 prongs	CZ 140-04-06	CZ 140-04-10	
	6 prongs	CZ 140-06-06 <small>(photo)</small>	CZ 140-06-10	CI 630-06
	8 prongs	CZ 140-08-06	CZ 140-08-10	CI 630-08

Retractors

	Dimension			
		GEO-Rider ∅ 6 mm CZ 012-00-06	GEO-Rider ∅ 10 mm CZ 012-00-10	GEO-Lock
 VOLKMANN SHARP	1 prong	CZ 142-01-06	CZ 142-01-10	
	2 prongs	CZ 142-02-06	CZ 142-02-10	
	3 prongs	CZ 142-03-06 (photo)	CZ 142-03-10	
	4 prongs	CZ 142-04-06	CZ 142-04-10	
	6 prongs	CZ 142-06-06	CZ 142-06-10	CI 634-06
	8 prongs	CZ 142-08-06	CZ 142-08-10	CI 634-08
 KELLY	50x40 mm	CZ 150-01-06	CZ 150-01-10 (photo)	
	65x50 mm	CZ 150-02-06	CZ 150-02-10	CI 660-01
	75x65 mm	CZ 150-03-06	CZ 150-03-10	
	90x75 mm	CZ 150-04-06	CZ 150-04-10	CI 660-02
 KELLY MOVABLE	50x40 mm	CZ 154-01-06	CZ 154-01-10 (photo)	
	65x50 mm	CZ 154-02-06	CZ 154-02-10	
	75x65 mm	CZ 154-03-06	CZ 154-03-10	
	90x75 mm	CZ 154-04-06	CZ 154-04-10	

	Dimension			
		GEO-Rider Ø 6 mm CZ 012-00-06	GEO-Rider Ø 10 mm CZ 012-00-10	GEO-Lock
 RICHARDSON	25x20 mm	CZ 160-01-06	CZ 160-01-10	
	30x27 mm	CZ 160-02-06	CZ 160-02-10 (photo)	
	38x38 mm	CZ 160-03-06	CZ 160-03-10	
	50x20 mm	CZ 160-04-06	CZ 160-04-10	
 RICHARDSON MOVABLE	25x20 mm	CZ 164-01-06	CZ 164-01-10	
	30x27 mm	CZ 164-02-06	CZ 164-02-10 (photo)	
	38x38 mm	CZ 164-03-06	CZ 164-03-10	
	50x20 mm	CZ 164-04-06	CZ 164-04-10	
 HOESEL	60x20 mm		CZ 170-01-10	
	80x30 mm		CZ 170-02-10	
	100x30 mm		CZ 170-03-10 (photo)	
	120x30 mm		CZ 170-04-10	
	140x30 mm		CZ 170-05-10	
	140x40 mm		CZ 170-06-10	

Retractors

	Dimension			
		GEO-Rider ∅ 6 mm CZ 012-00-06	GEO-Rider ∅ 10 mm CZ 012-00-10	GEO-Lock
 HOESEL MOVABLE	60x20 mm		CZ 174-01-10	
	80x30 mm		CZ 174-02-10	
	100x30 mm		CZ 174-03-10	
	120x30 mm		CZ 174-04-10	
	140x30 mm		CZ 174-05-10 (photo)	
	140x40 mm		CZ 174-06-10	
 HARRINGTON	127x40 mm		CZ 180-01-10 (photo)	
	127x62 mm		CZ 180-02-10	
 HARRINGTON MOVABLE	127x40 mm		CZ 184-01-10 (photo)	
	127x62 mm		CZ 184-02-10	
 DEAVER	25 mm		CZ 190-01-10	
	38 mm		CZ 190-02-10 (photo)	
	50 mm		CZ 190-03-10	
	75 mm		CZ 190-04-10	

	Dimension			
		GEO-Rider Ø 6 mm CZ 012-00-06	GEO-Rider Ø 10 mm CZ 012-00-10	GEO-Lock
 DEAVER MOVABLE	25 mm			CZ 194-01-10
	38 mm			CZ 194-02-10 (photo)
	50 mm			CZ 194-03-10
	75 mm			CZ 194-04-10
 MIKULICZ	95x35 mm			CZ 200-01-10
	120x50 mm			CZ 200-02-10 (photo)
	150x50 mm			CZ 200-03-10
	180x50 mm			CZ 200-04-10
 CORYLLOS	82x22 mm			CZ 210-01-10
	108x45 mm			CZ 210-02-10 (photo)
	115x65 mm			CZ 210-03-10

Retractors

	Dimension			
		GEO-Rider Ø 6 mm CZ 010-00-06	GEO-Rider Ø 10 mm CZ 010-00-10	GEO-Lock
 SAUERBRUCH	125x37 mm		CZ 220-01-10 (photo)	
 BRUNNER	80x20 mm 100x20 mm 120x25 mm 140x25 mm 160x30 mm 180x30 mm		CZ 230-01-10 CZ 230-02-10 CZ 230-03-10 CZ 230-04-10 CZ 230-05-10 (photo) CZ 230-06-10	
 BALFOUR	70x85 mm		CZ 240-01-10 (photo)	
 BALFOUR MOVABLE	70x85 mm		CZ 244-01-10 (photo)	

				
	Dimension	GEO-Rider ∅ 6 mm CZ 010-00-06	GEO-Rider ∅ 10 mm CZ 010-00-10	GEO-Lock
 ST. MARKS	60x45 mm		CZ 250-02-10 (photo)	
 ABDOMINAL SPATULA BENDABLE	30 mm 40 mm 50 mm	CZ 400-03-06 (photo) CZ 400-04-06 CZ 400-06-06	CZ 400-03-10 CZ 400-04-10 CZ 400-06-10	
 DOYEN	80 x 53 mm			CI 620-80 (photo)



CARE & MAINTENANCE

Water Jet Pistol



SA 101-00
Pistol only

SA 100-00
complete

including of:



SA 102-01
for bottles



SA 102-02
for cones of record-syringes



SA 102-03
for catheters



SA 102-04
for drainage tubings



SA 102-05
for receptacles



SA 102-06
for hypodermic needles with Record-cone



SA 102-07
for hypodermic needles with Luer-cone



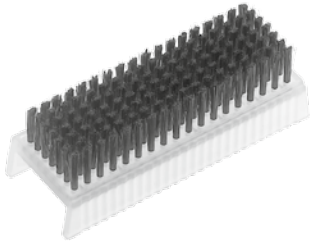
SA 102-08
for measuring and volumetric pipettes



SA 102-09
for fine pipettes

Hand and Nailbrush, Oil

SO 900-01-09



Nailbrush -
more than 400 times
autoclavable

Brush Dispensers
for 10 or 20 brushes
on inquiry



InstruOil is free of
silicone, thus stains or
crust are avoided on the
surface of the surgical
instrument. Prevents to
rustgrowth. InstruOil is
physiologically unob-
jectionable and is to be
used before sterilization.

40 ml
250 ml

SO 895-40-09
SO 895-50-09

Sterilising Forceps



CHEATLE

SA 501-27
27 cm / 10¾"



ROGGE

SA 510-23
23 cm / 9"



ROGGE

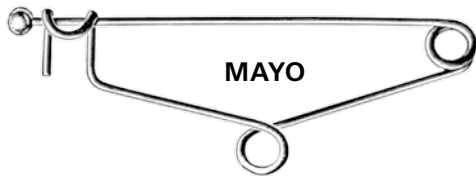
20 cm / 8" | **SA 511-20**
30 cm / 12" | **SA 511-30**



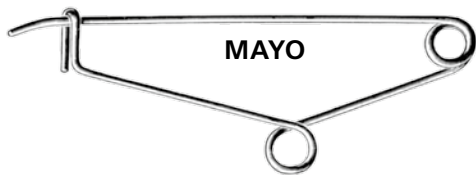
UNIVERSAL

	straight	curved
20 cm / 8"	SA 520-20	SA 521-20
28 cm / 11"	SA 520-28	SA 521-28

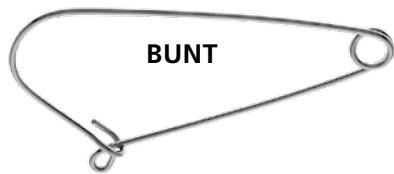
Safety Pins, Waste Forceps



SA 747-14
14 cm / 5½"



SA 749-14
14 cm / 5½"



SA 751-11
11 cm / 4¼"



SAUERBRUCH

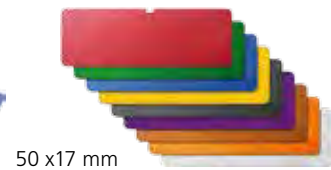
SA 770-55
55 cm / 21½"

Accessories



SZ 798-00
860 x 325 x 125 mm

Further sizes of sterilisation boxes and suitable baskets are available in our general catalogue.



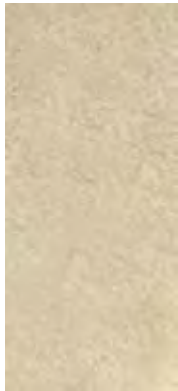
50 x 17 mm

270 x 125 mm	SZ 810-01-09	270 x 125 mm	SZ 810-02-09
245 x 245 mm	SZ 812-01-09	245 x 245 mm	SZ 812-02-09
220 x 230 mm	SZ 814-01-09	220 x 230 mm	SZ 814-02-09
380 x 230 mm	SZ 816-01-09	380 x 230 mm	SZ 816-02-09
440 x 230 mm	SZ 818-01-09	440 x 230 mm	SZ 818-02-09
520 x 230 mm	SZ 820-01-09	520 x 230 mm	SZ 820-02-09

SZ 822-01-09
545 x 255 mm

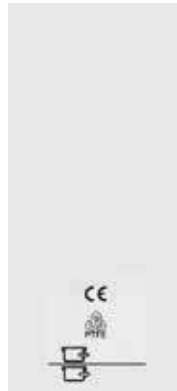
	engraved	blank
	SZ 830-01-09	SZ 832-01-09
	SZ 830-02-09	SZ 832-02-09
	SZ 830-03-09	SZ 832-03-09
	SZ 830-04-09	SZ 832-04-09
	SZ 830-05-09	SZ 832-05-09
	SZ 830-06-09	SZ 832-06-09
	SZ 830-07-09	SZ 832-07-09
	SZ 830-08-09	SZ 832-08-09
	SZ 830-09-09	SZ 832-09-09

Accessories



SZ 852-01-09
210 x 95 mm

Long-term textil filter
for mini and dental container
for 50 sterilisation cycles



SZ 854-01-09
210 x 95 mm

Long-term PTFE filter
for mini and dental container
for 1200 sterilisation cycles



SZ 850-01-09
210 x 95 mm

Disposable Paper Filter
for 1/1, 1/2, 3/4 container,
for mini and dental container

SZ 855-01-09
Ø 190 mm



Long-term textil filter
for 1/1, 1/2, 3/4 container
for 50 sterilisation cycles

SZ 857-01-09
Ø 190 mm



Long-term PTFE filter
for 1/1, 1/2, 3/4 container
for 1200 sterilisation cycles

SZ 853-01-09
Ø 190 mm



Disposable Paper Filter
for 1/1, 1/2, 3/4 container

GEOMED® Medizin-Technik GmbH & Co. KG
Ludwigstaler Straße 27 · 78532 Tuttlingen

Tel.: +49 (0) 74 61 / 93 55 - 0

Fax: +49 (0) 74 61 / 93 55 - 93

eMail: info@geomed.de
Internet: www.geomed.de